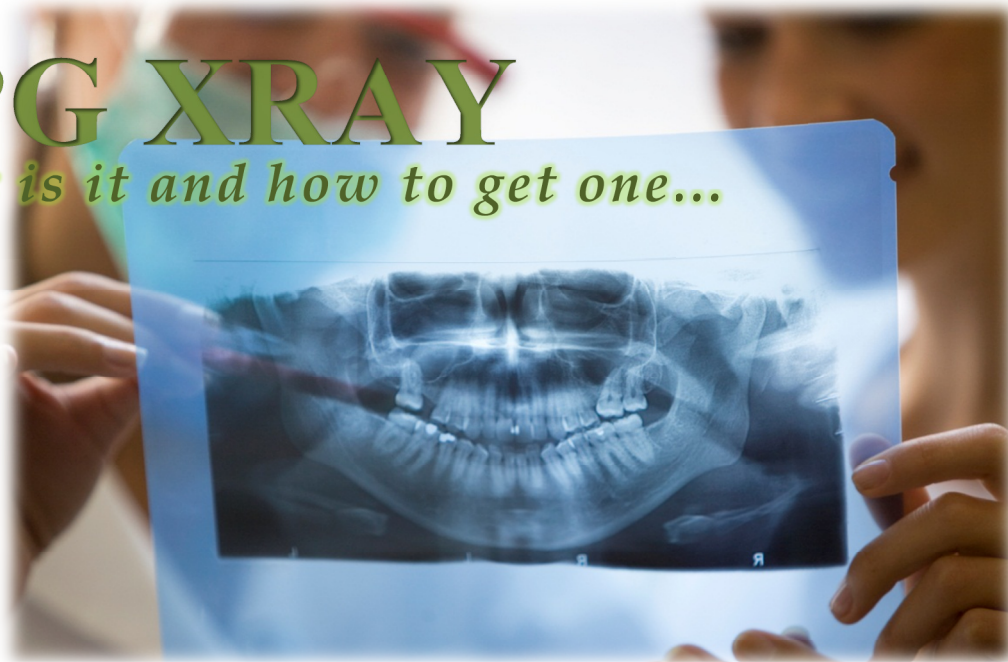


OPG XRAY

What is it and how to get one...



An Orthopantomogram or OPG, is a special type of x-ray looking at the lower face that displays both the upper and lower teeth in a long flat line.

It demonstrates the number, position and growth of all your teeth including those that have not yet surfaced.

Our specialist in Thailand will need your OPG X-ray to be able to determine what treatment and procedure is needed. They will not be able to provide a quotation without seeing this X-ray.

To obtain your OPG X-Ray please refers to the below 2 different ways to source:

1. Check with your Current Dentist to see if they have one on file.
If they do have a current OPG (Less than 6 months old).
Ask them to send via Email, via mail (disc format OR an A2 size X-ray format) as soon as possible.
Your dentist holds onto this X-Ray purely for personal recording purposes but the X-Ray does actually belong to you. And you can certainly ask for a copy of it.

OR

2. Visit your Local GP and ask for a 'Referral' for an OPG X-ray.
Your GP will advise of the nearest and most convenient Radiology Centre you can get this done at.
Not all Radiology places have an OPG X-Ray – so, your GP will ensure you are aware where to go.
You should NOT need to make an appointment with the Radiology Centre – the process is very quick/easy.

SENDING TO SOMNIO:

The X-Ray can come in 3 different formats:.

A2 Size print version (most common), Disc or sent electronically (email)

Our preferred method is Disc – as this is the clearest form for us to copy and send to Specialists. SO if you have a choice please ask for the CD.

- If you receive the X-Ray in **A2 Print** form – please scan and send to info@somniomedical.com
 - If the X-Ray is sent **electronically** – please forward to info@somniomedical.com
- If the X-Ray is in **Disc format**: please mail to the below PO Box or we can arrange a meeting with you to exchange. (we will send the disc back to you via post once we have saved the images)